

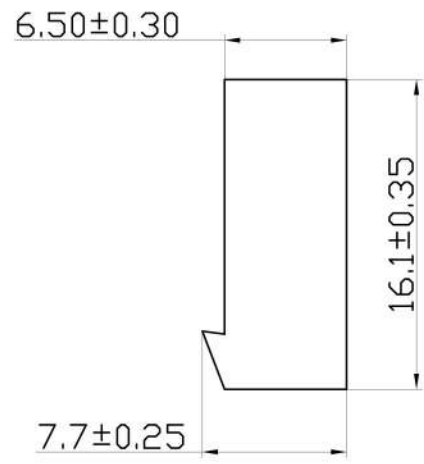
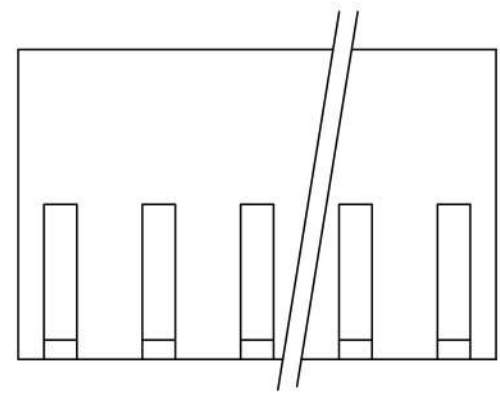
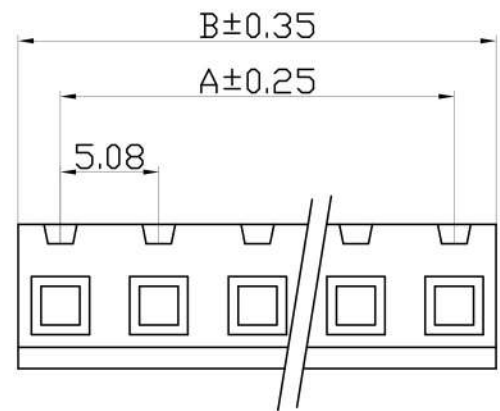
标记 MARK	更改内容 MODIFICATION	日期 DATE	修改 DRAW	核准 APPROVE

技术要求Specification:

- 1、材质Material: PA66 UL94V-2;
- 2、额定电流 Current rating:5.0A AC,DC
- 3、额定电压 Voltage rating: 250V AC,DC
- 4、温度范围 Temperature range:-25℃to+85℃
- 5、接触电阻 Contact resistance:≤10mΩ
- 6、绝缘电阻 Insulation resistance:≥1000MΩ
- 7、耐压 Withstand voltage:1500V AC/minute
- 8、塑件表面平整光洁, 无明显的毛刺、气泡、变形、浇口拉伤、缺料等不良现象。

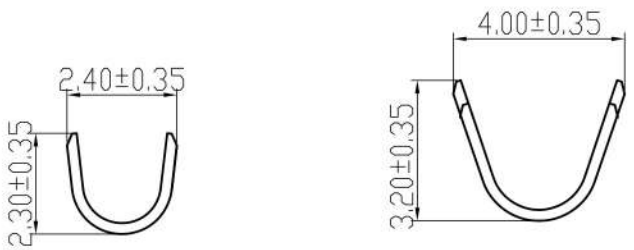
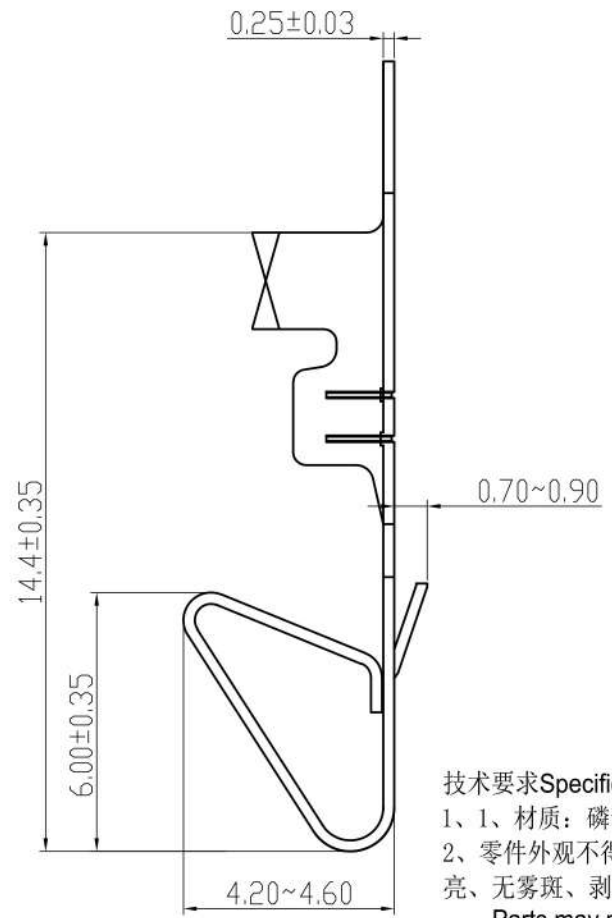
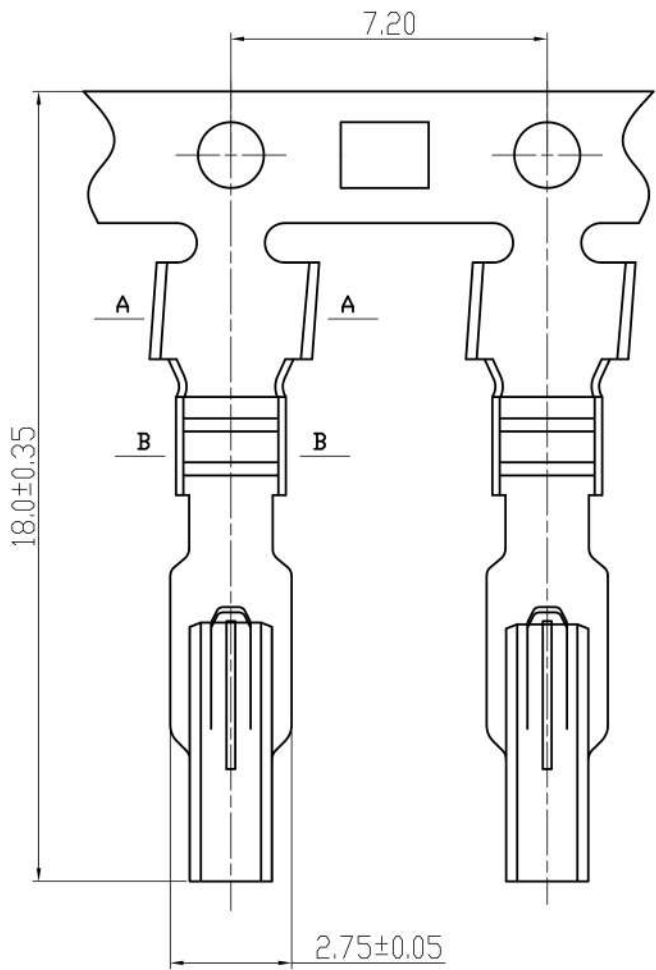
Plastic surface smooth and clean, no obvious burrs, bubbles, distortion, gate strain, lack of material and other undesirable phenomena.

线数 Poles	型号 Type	尺寸Dimensions (mm)	
		A	B
2	5.08-2Y	5.08	10.16
3	5.08-3Y	10.16	15.24
4	5.08-4Y	15.24	20.32
5	5.08-5Y	20.32	25.40
6	5.08-6Y	25.4	30.48
7	5.08-7Y	30.48	35.56
8	5.08-8Y	35.56	40.64
9	5.08-9Y	40.64	45.72
10	5.08-10Y	45.72	50.80
11	5.08-11Y	50.80	55.88
12	5.08-12Y	55.88	60.96



TOLERANCE UNLESS OTHERWISE SPECIFIED		*: Inspection Item		Canner® www.canner.co.in			
.X±0.30	X." ±1°	NO.	:Cp/Cpk and SPC Control Item	名称	5.08-NY HOUSING		
.XX±0.20	.X° ±			材料	PA66	编号	SH50801-NY
.XXX±0.10	.XX° ±			料厚		单位	mm
制图	丁浩然	料宽		比例	1:1	版本	A
审核	林云昆	日期	2024.05.23	角法			规格书
批准	谭猛	日期	2024.05.23	角法			规格书

标记 MARK	更改内容 MODIFICATION	日期 DATE	修改 DRAW	核准 APPROVE



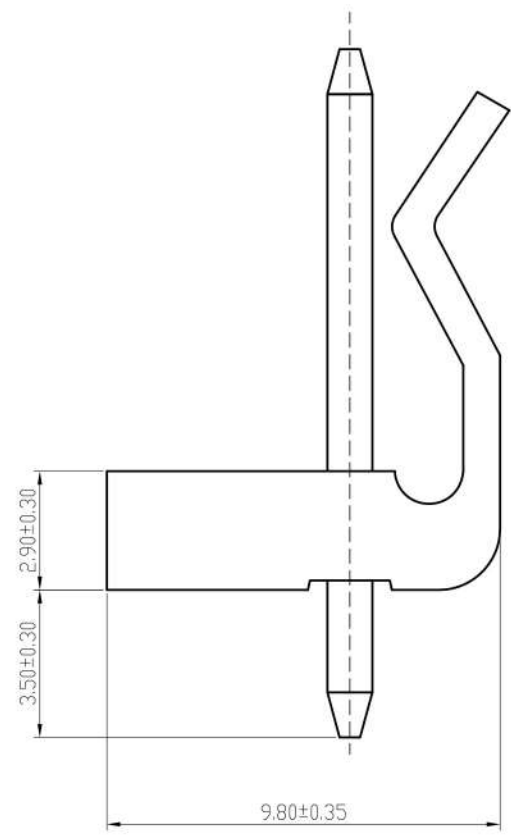
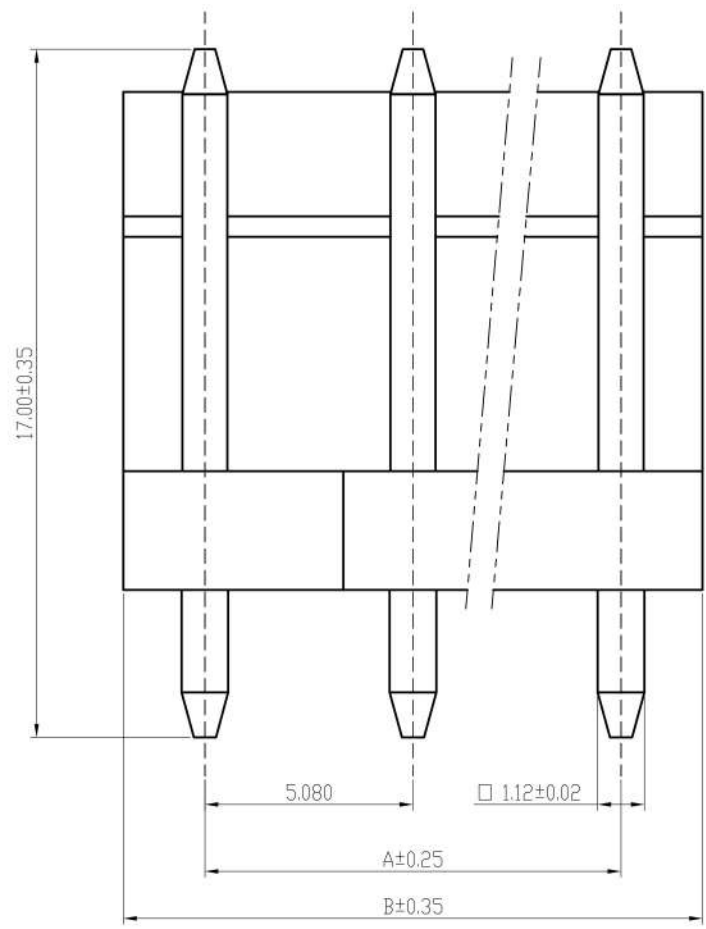
技术要求Specification:

- 1、材质：磷青铜，表面镀锡 Material:Phos.Bronze Tin-Plated
- 2、零件外观不得有有害毛刺、尖角、锐边和机械损伤;表面镀层应均匀、光亮、无雾斑、剥层等缺陷;

Parts may not have the appearance of harmful burrs,sharp corners,sharp edges and mechanical damage,surface coating should be uniform, bright,no fog spots,delamination and other defects.

TOLERANCE UNLESS OTHERWISE SPECIFIED		*: Inspection Item		Canner® www.canner.co.in			
.X±0.30	X.° ±1°	NO.	:Cp/Cpk and SPC Control Item	名称	3.96/5.08端子通用		
.XX±0.20	.X° ±			料号	SH39601-T	单位	mm
.XXX±0.10	.XX° ±			料厚	SH50801-T	版本	A/1
制图	赵旭强	料宽		比例	1:1		
审核	江树钦	日期	2022.08.19	角法	PROJ.		
批准	谭猛			规格书			

标记 MARK	更改内容 MODIFICATION	日期 DATE	修改 DRAW	核准 APPROVE



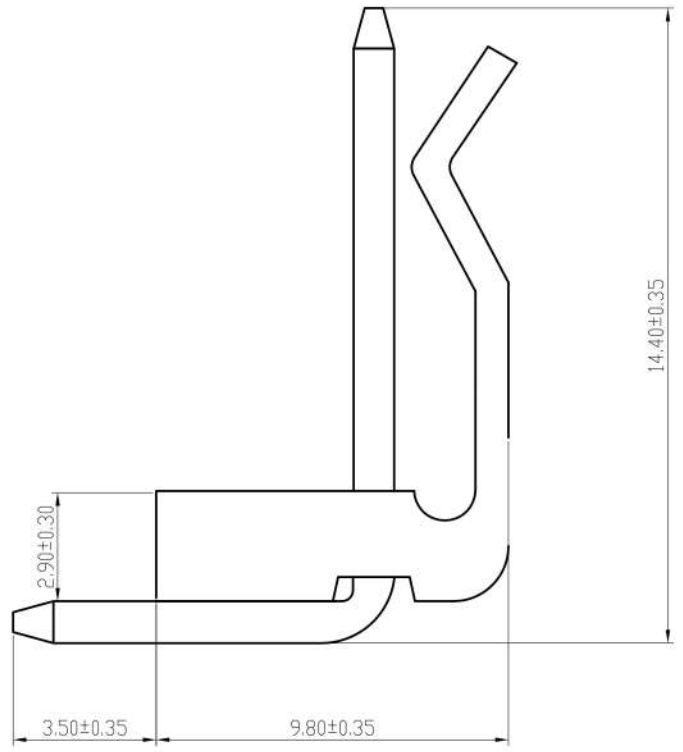
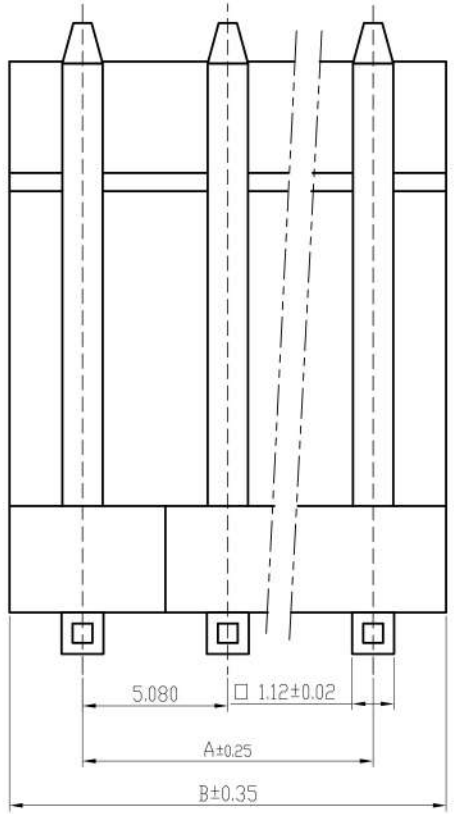
线数 Poles	型号 Type	尺寸Dimensions (mm)	
		A	B
2	5.08-2A	5.08	10.16
3	5.08-3A	10.16	15.24
4	5.08-4A	15.24	20.32
5	5.08-5A	20.32	25.40
6	5.08-6A	25.4	30.48
7	5.08-7A	30.48	35.56
8	5.08-8A	35.56	40.64
9	5.08-9A	40.64	45.72
10	5.08-10A	45.72	50.80
11	5.08-11A	50.80	55.88
12	5.08-12A	55.88	60.96

技术要求Specification:

- 1、材质Material: 塑座 Base:PA66 UL94V-2;
针 Pin:黄铜 Brass Tin-Plated
- 2、塑件表面平整、光洁、无毛刺、气泡、变形、浇口无拉伤、缺料等不良现象。
Housing Surface Levelling, Clen and tidy, No burr, Air bubble, Deformation, No pull, Lackmaterial Unhealthy tendencies.

TOLERANCE UNLESS OTHERWISE SPECIFIED		*: Inspection Item		Canner® www.canner.co.in			
.X±0.30	X." ±1"	NO.	:Cp/Cpk and SPC Control Item	名称	5.08-NA		
.XX±0.20	.X" ±			料厚	PA66	编号	SH50801-NA
.XXX±0.10	.XX" ±			料宽		比例	1:1
制图	丁浩然	料厚	THICK	DWG NO.	SH50801-NA		
审核	林云昆	料宽	WIDE	SCALE	1:1		
批准	谭猛	日期	DATE	角法	PROJ.		
			2024.05.23	⊙	规格书		

标记 MARK	更改内容 MODIFICATION	日期 DATE	修改 DRAW	核准 APPROVE



线数 Poles	型号 Type	尺寸Dimensions (mm)	
		A	B
2	5.08-2AW	5.08	10.16
3	5.08-3AW	10.16	15.24
4	5.08-4AW	15.24	20.32
5	5.08-5AW	20.32	25.40
6	5.08-6AW	25.4	30.48
7	5.08-7AW	30.48	35.56
8	5.08-8AW	35.56	40.64
9	5.08-9AW	40.64	45.72
10	5.08-10AW	45.72	50.80
11	5.08-11AW	50.80	55.88
12	5.08-12AW	55.88	60.96

技术要求Specification:

- 1、材质Material: 塑座 Base:PA66 UL94V-2;
针 Pin:黄铜 Brass Tin-Plated
- 2、塑件表面平整、光洁、无毛刺、气泡、变形、浇口无拉伤、缺料等不良现象。
Housing Surface Levelling, Clen and tidy, No burr, Air bubble, Deformation, No pull, Lackmaterial Unhealthy tendencies.

TOLERANCE UNLESS OTHERWISE SPECIFIED		*: Inspection Item		Canner® www.canner.co.in			
.X±0.30	X." ±1°	NO.	:Cp/Cpk and SPC Control Item	名称	5.08-NAW		
.XX±0.20	.X° ±			料厚	/	编号	SH50801-NAW
.XXX±0.10	.XX° ±			料宽		比例	1:1
制图	丁浩然	料厚	THICK	角法	☉	版本	A
审核	林云昆	料宽	WIDE	SCALE		日期	2024.05.23
批准	谭猛	日期	DATE	PROJ.			