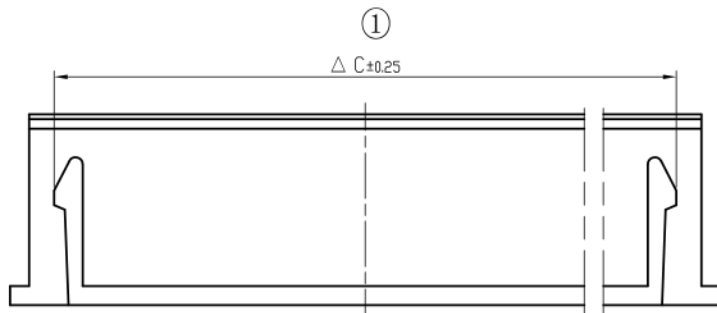
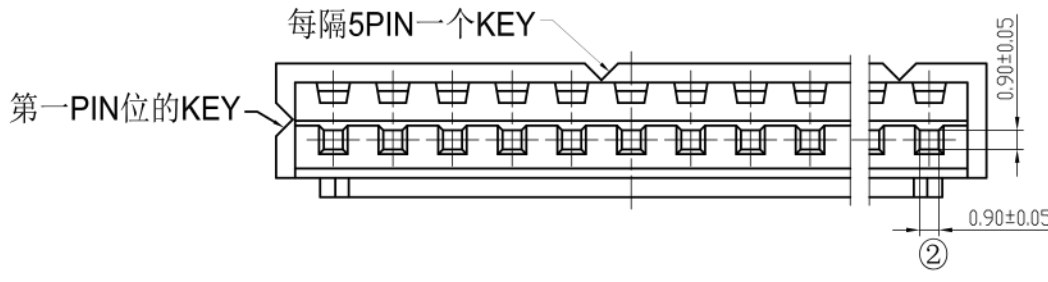
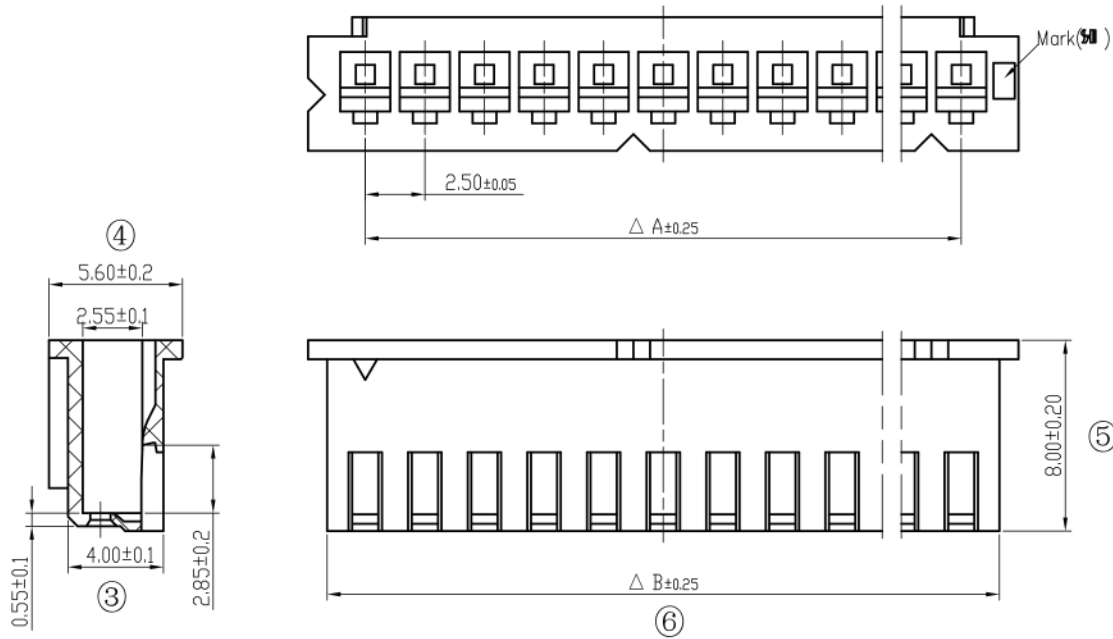


标记 MARK	更改内容 MODIFICATION	日期 DATE	修改 DRAW	核准 APPROVE

技术要求Specification:

- 1、材质Material: PA66 UL94V-0;
- 2、额定电流 Current rating:3.0A AC,DC
- 3、额定电压 Voltage rating: 250V AC,DC
- 4、温度范围 Temperature range:-25°Cto+85°C
- 5、接触电阻 Contact resistance:≤20mΩ
- 6、绝缘电阻 Insulation resistance:≥1000MΩ
- 7、耐压 Withstand voltage:1000V AC/minute
- 8、塑件表面平整光洁, 无明显的毛刺、气泡、变形、浇口拉伤、缺料等不良现象。

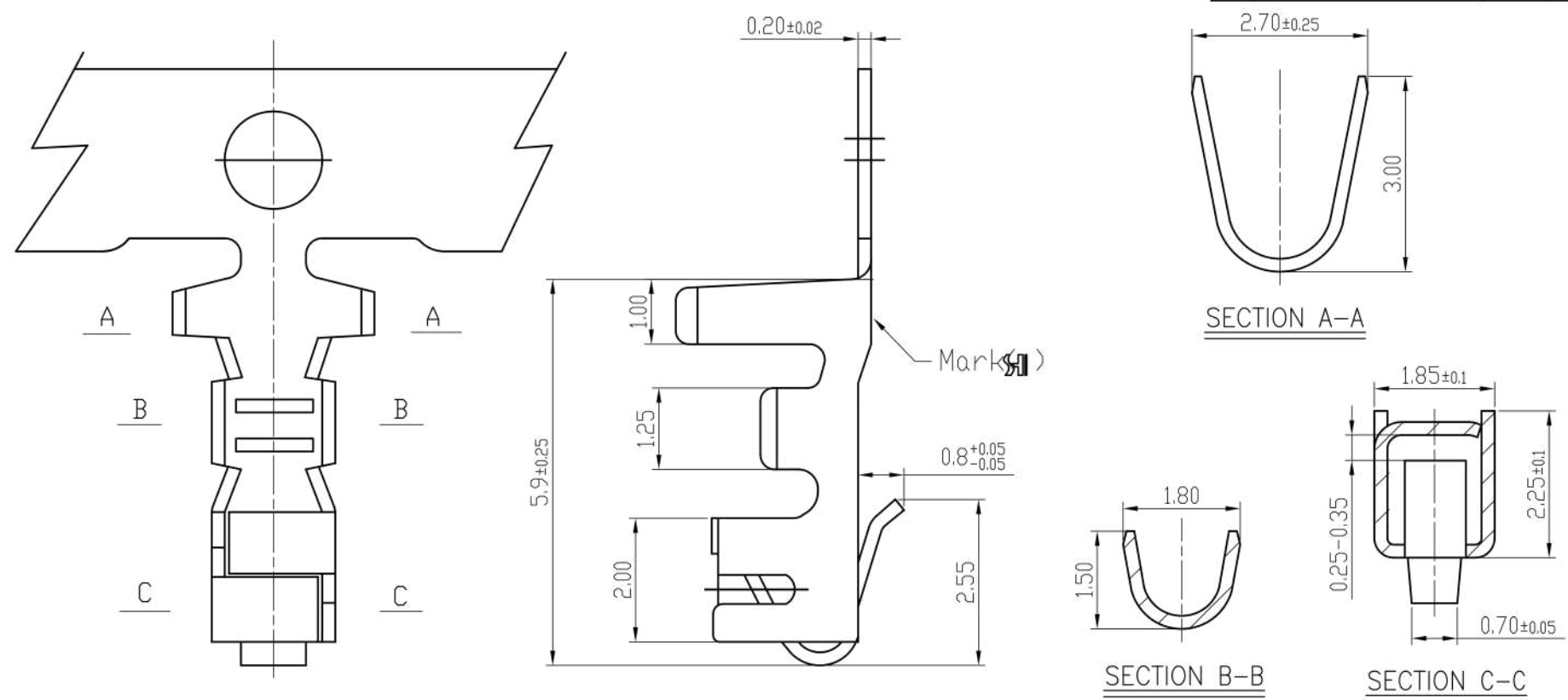
Plastic surface smooth and clean, no obvious burrs, bubbles, distortion, gate strain, lack of material and other undesirable phenomena.



线数	型号	尺寸			
		A	B	C	D
2	SH25001-2Y	2.50	5.70	3.70	3.70
3	SH25001-3Y	5.00	8.20	6.20	6.20
4	SH25001-4Y	7.50	10.70	8.70	8.70
5	SH25001-5Y	10.00	13.20	11.20	11.20
6	SH25001-6Y	12.50	15.70	13.70	13.70
7	SH25001-7Y	15.00	18.20	16.20	16.20
8	SH25001-8Y	17.50	20.70	18.70	18.70
9	SH25001-9Y	20.00	23.20	21.20	21.20
10	SH25001-10Y	22.50	25.70	23.70	23.70
11	SH25001-11Y	25.00	28.20	26.20	26.20
12	SH25001-12Y	27.50	30.70	28.70	28.70
13	SH25001-13Y	30.00	33.20	31.20	31.20
14	SH25001-14Y	32.50	35.70	33.70	33.70
15	SH25001-15Y	35.00	38.20	36.20	36.20
16	SH25001-16Y	37.50	40.70	38.70	38.70

TOLERANCE UNLESS OTHERWISE SPECIFIED		*: Inspection Item		Canner® www.canner.co.in			
.X±0.30	X.° ±1°	NO.	:Cp/Cpk and SPC Control Item	名称	XH-NY HOUSING		
.XX±0.20	.X° ±			材料	PA66	编号	SH25001-NY
.XXX±0.10	.XX° ±			料厚		单位	mm
制图	谭猛	料宽		比例	1:1	版本	A
审核	林金喜	日期	2014.04.22	角法	规格书		
批准	江树钦	日期	2014.04.22				

标记 MARK	更改内容 MODIFICATION	日期 DATE	修改 DRAW	核准 APPROVE



技术要求Specification:

- 1、材质：磷青铜，表面镀锡 Material:Phos.Bronze Tin-Plated;
- 2、适用线规：AWG#30to#22
Applicable wire:AWG#30to#22
- 3、零件外观不得有有害毛刺、尖角、锐边和机械损伤;表面镀层应均匀、光亮、无雾斑、剥层等缺陷;
Parts may not have the appearance of harmful burrs,sharp corners,sharp edges and mechanical damage,surface coating should be uniform, bright,no fog spots,delamination and other defects.
- 4、适配塑件型号：SH25001-NY;SH25010-NY;SH25026-NY;SH25027-NY;
Suitable Housing Type: SH25001-NY;SH25010-NY;SH25026-NY;SH25027-NY;

TOLERANCE UNLESS OTHERWISE SPECIFIED		*: Inspection Item		Canner® www.canner.co.in					
. X±0.30	. X.° ±1°	(NO.)	:Cp/Cpk and SPC Control Item	材料	磷青铜	名称	XH-T/8.2 TERMINAL		
. XX±0.20	. X° ±			料厚	0.20 mm	编号	SH25001-T-82	单位	mm
. XXX±0.10	. XX° ±			料宽		比例	1:1	版本	AO
制图	赵旭强	日期	2022.07.23	角法			规格书		
审核	江树钦								
批准	谭猛								

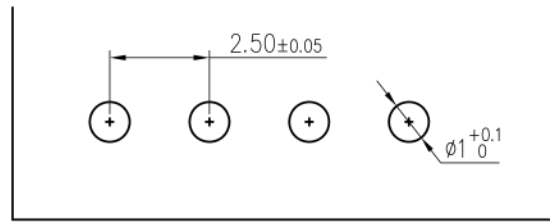
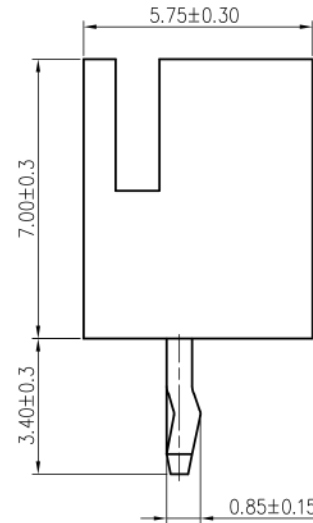
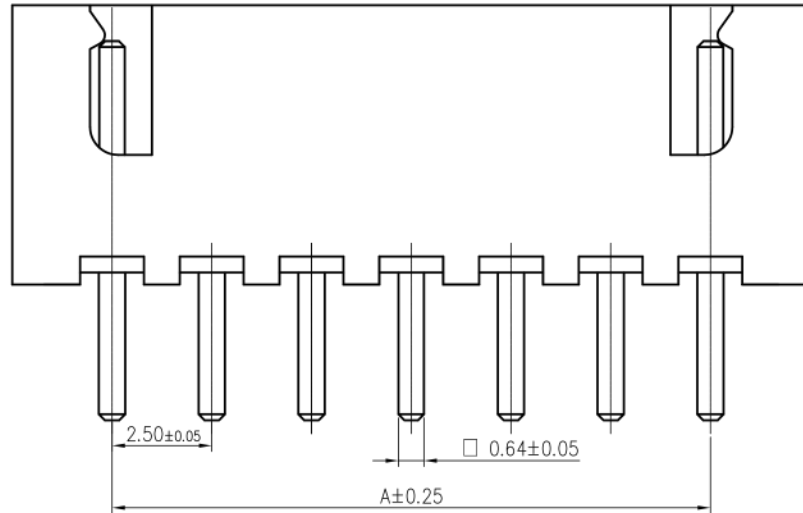
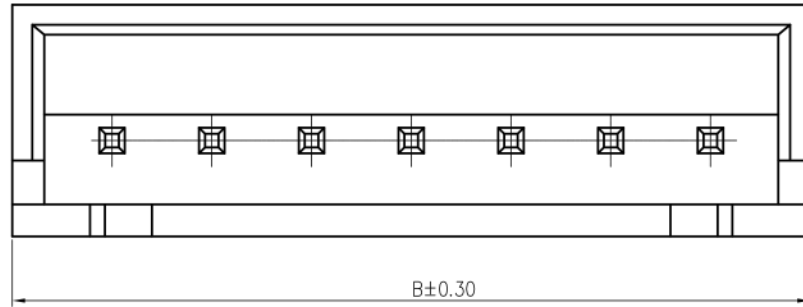
标记 MARK	更改内容 MODIFICATION	日期 DATE	修改 DRAW	核准 APPROVE

技术要求Specification:

1、材质Material: 塑座 Base:PA66 UL94V-0;
针 Pin:黄铜 Brass Tin-Plated

8、塑件表面平整光洁, 无明显的毛刺、气泡、变形、浇口拉伤、缺料等不良现象。

Plastic surface smooth and clean, no obvious burrs, bubbles, distortion, gate strain, lack of material and other undesirable phenomena.

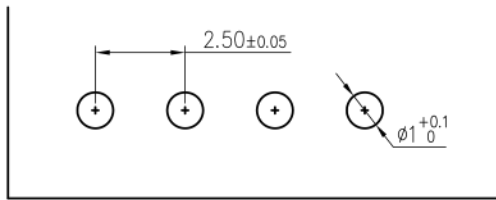
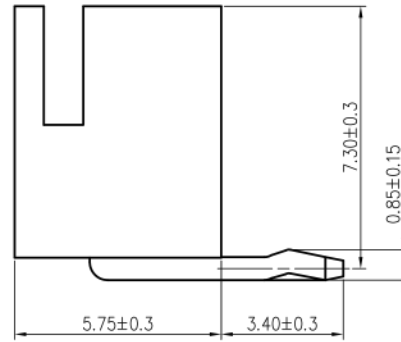
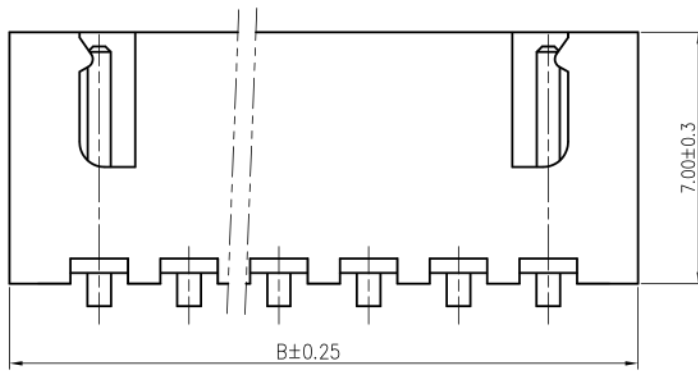
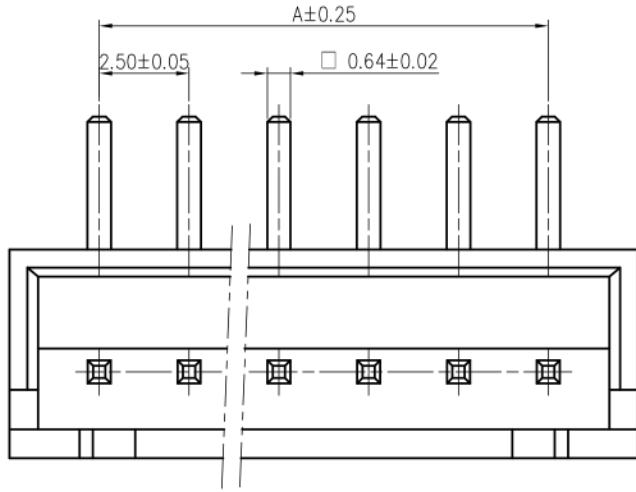


电路板尺寸
电路板厚度1.60mm

线数	型号	尺寸	
		A	B
2	SH25001-2A	2.50	7.55
3	SH25001-3A	5.00	10.05
4	SH25001-4A	7.50	12.55
5	SH25001-5A	10.00	15.05
6	SH25001-6A	12.50	17.55
7	SH25001-7A	15.00	20.05
8	SH25001-8A	17.50	22.55
9	SH25001-9A	20.00	25.05
10	SH25001-10A	22.50	27.55
11	SH25001-11A	25.00	30.05
12	SH25001-12A	27.50	32.55
13	SH25001-13A	30.00	35.05
14	SH25001-14A	32.50	37.55
15	SH25001-15A	35.00	40.05
16	SH25001-16A	37.50	42.55

TOLERANCE UNLESS OTHERWISE SPECIFIED		*: Inspection Item		Canner® www.canner.co.in	
.X±0.30	ANGLES	NO.	:Cp/Cpk and SPC Control Item	名称	XH-NA HOUSING
.XX±0.20	.X° ±0.0°	材料	PA66	料厚	THICK
.XXX±0.10	.X° ±0.00°	料宽	WIDE	比例	1:1
制图	陈小浓	日期	2012. 3. 10	角法	⊕
审核	林金喜	日期	2012. 3. 10	角法	⊕
批准	江树钦	日期	2012. 3. 10	角法	⊕
				单位	M M
				版本	A/1
				规格书	

标记 MARK	更改内容 MODIFICATION	日期 DATE	修改 DRAW	核准 APPROVE



电路板尺寸
电路板厚度1.60mm

技术要求Specification:

- 1、材质Material: 塑座 Base:PA66 UL94V-0;
针 Pin:黄铜 Brass Tin-Plated
- 8、塑件表面平整光洁, 无明显的毛刺、气泡、变形、浇口拉伤、缺料等不良现象。
Plastic surface smooth and clean, no obvious burrs, bubbles, distortion, gate strain, lack of material and other undesirable phenomena.

线数	型号	尺寸	
		A	B
2	SH25001-2AW	2.50	7.55
3	SH25001-3AW	5.00	10.05
4	SH25001-4AW	7.50	12.55
5	SH25001-5AW	10.00	15.05
6	SH25001-6AW	12.50	17.55
7	SH25001-7AW	15.00	20.05
8	SH25001-8AW	17.50	22.55
9	SH25001-9AW	20.00	25.05
10	SH25001-10AW	22.50	27.55
11	SH25001-11AW	25.00	30.05
12	SH25001-12AW	27.50	32.55
13	SH25001-13AW	30.00	35.05
14	SH25001-14AW	32.50	37.55
15	SH25001-15AW	35.00	40.05
16	SH25001-16AW	37.50	42.55

TOLERANCE UNLESS OTHERWISE SPECIFIED		*: Inspection Item		Canner® www.canner.co.in	
.X±0.30	ANGLES	NO.	:Cp/Cpk and SPC Control Item	名称	XH-NAW HOUSING
.XX±0.20	.X° ±0.0°	材料	PA66	料厚	
.XXX±0.10	.X° ±0.00°	料宽		料厚	
制图	陈小浓	料宽		名称	
审核	林金喜	日期	2012.6.1	编号	SH25001-NAW
批准	江树钦	比例	1:1	单位	MM
		角法		版本	A/1
					规格书