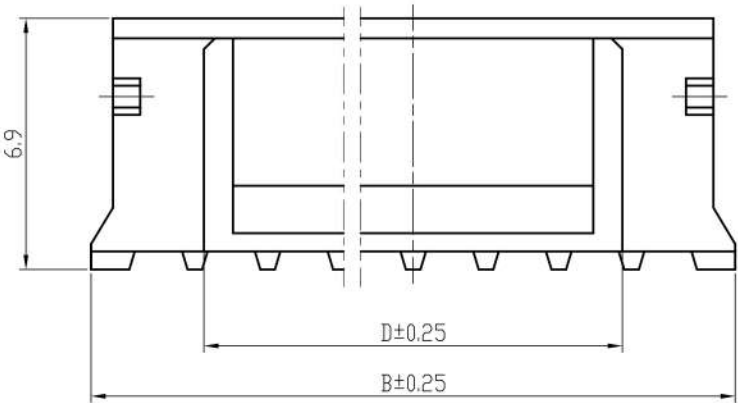


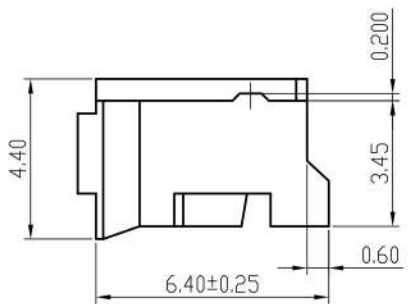
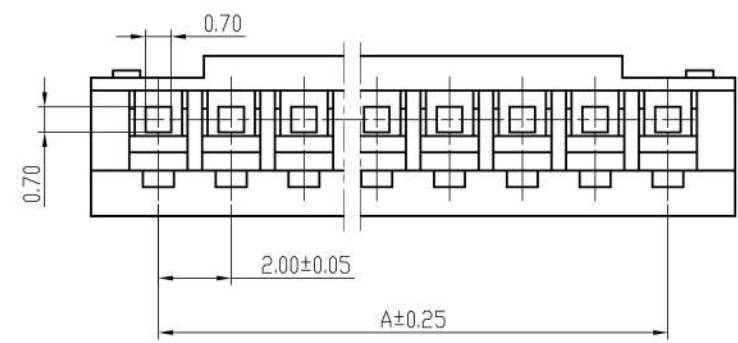
标记 MARK	更改内容 MODIFICATION	日期 DATE	修改 DRAW	核准 APPROVE



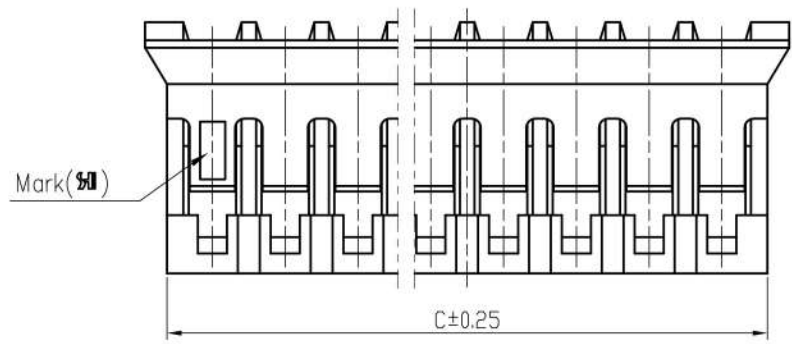
技术要求Specification:

- 1、材质Material: PA66 UL94V-0;
- 2、额定电流 Current rating:2.0A AC,DC
- 3、额定电压 Voltage rating: 100V AC,DC
- 4、温度范围 Temperature range:-25℃to+85℃
- 5、接触电阻 Contact resistance:≤20mΩ
- 6、绝缘电阻 Insulation resistance:≥1000MΩ
- 7、耐压 Withstand voltage:800V AC/minute
- 8、塑件表面平整光洁, 无明显的毛刺、气泡、变形、浇口拉伤、缺料等不良现象。
Plastic surface smooth and clean, no obvious burrs, bubbles, distortion, gate strain, lack of material and other undesirable phenomena.

Plastic surface smooth and clean, no obvious burrs, bubbles, distortion, gate strain, lack of material and other undesirable phenomena.

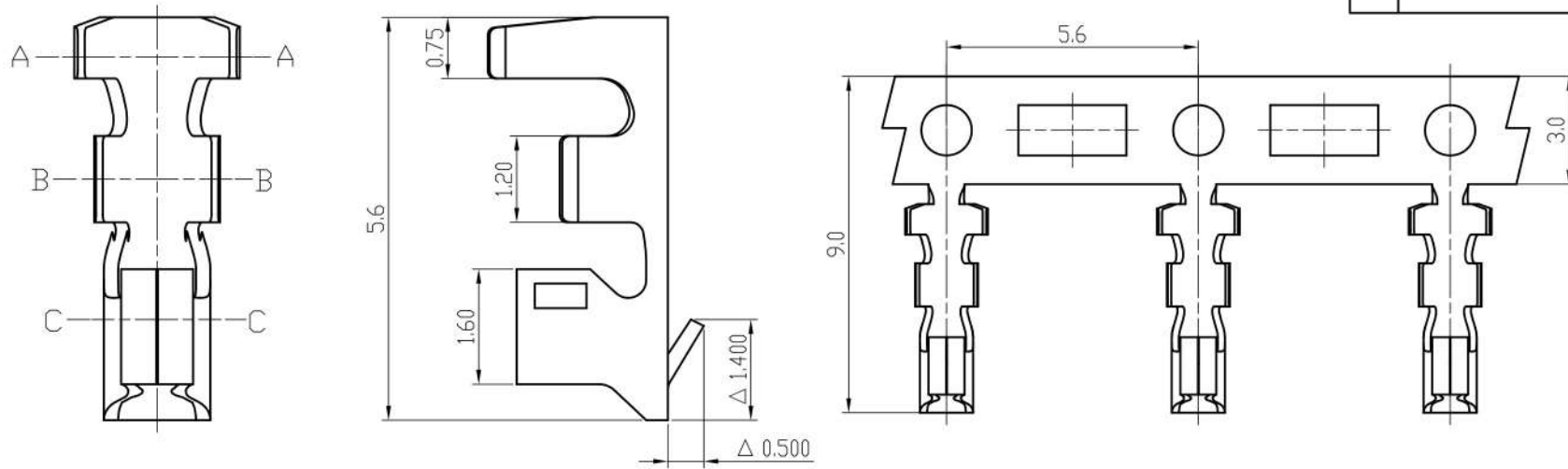


线数	型号	尺寸			
		A	B	C	D
2	SH20001-2Y	2.00	5.70	4.50	0.55
3	SH20001-3Y	4.00	7.70	6.50	1.40
4	SH20001-4Y	6.00	9.70	8.50	3.40
5	SH20001-5Y	8.00	11.70	10.50	5.40
6	SH20001-6Y	10.00	13.70	12.50	7.40
7	SH20001-7Y	12.00	15.70	14.50	9.40
8	SH20001-8Y	14.00	17.70	16.50	11.40
9	SH20001-9Y	16.00	19.70	18.50	13.40
10	SH20001-10Y	18.00	21.70	20.50	15.40
11	SH20001-11Y	20.00	23.70	22.50	17.40
12	SH20001-12Y	22.00	25.70	24.50	19.40
13	SH20001-13Y	24.00	27.70	26.50	21.40
14	SH20001-14Y	26.00	29.70	28.50	23.40
15	SH20001-15Y	28.00	31.70	30.50	25.40
16	SH20001-16Y	30.00	33.70	32.50	27.40
17	SH20001-17Y	32.00	35.70	34.50	29.40
18	SH20001-18Y	34.00	37.70	36.50	31.40
19	SH20001-19Y	36.00	39.70	38.50	33.40
20	SH20001-20Y	38.00	41.70	40.50	35.40

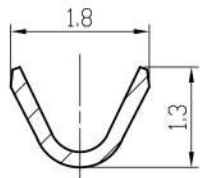


TOLERANCE UNLESS OTHERWISE SPECIFIED		*: Inspection Item		www.canner.co.in	
.X±0.30	X." ±1"	(NO.)	:Cp/Cpk and SPC Control Item		
.XX±0.2	.X° ±	材料	PA66	名称	PH-NY HOUSING
.XXX±0.10	.XX° ±	MATERIAL		编号	SH20001-NY
制图	赵旭强	料厚		单位	mm
DRAWIN		THICK		DWG NO.	
审核	林云昆	料宽		比例	1:1
CHECKED		WIDE		SCALE	
批准	谭猛	日期	2022.02.17	角法	规格书
APPROVE		DATE		PROJ.	

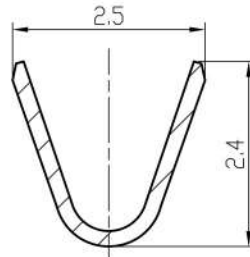
标记 MARK	更改内容 MODIFICATION	日期 DATE	修改 DRAW	核准 APPROVE



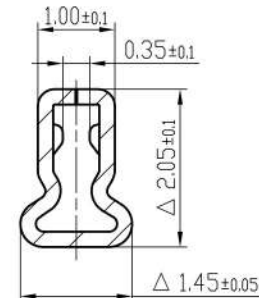
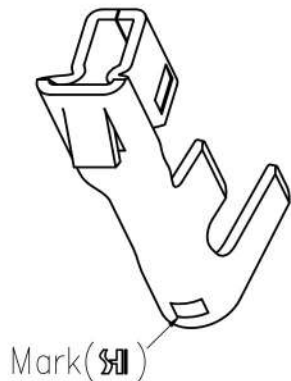
料带图 比例: 1:2



SECTION B-B



SECTION A-A



SECTION C-C

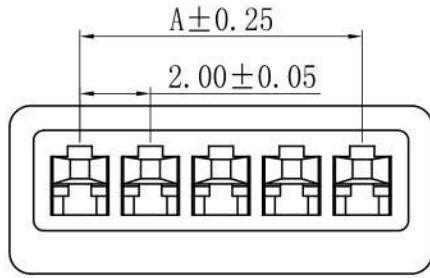
技术要求 Specification:

- 1、材质: 磷青铜, 表面镀锡 Material: Phos. Bronze Tin-Plated
镀层: Sn ≥ 60u";
- 2、适用线规 Applicable wire: AWG#30-#24;
- 3、零件外观不得有有害毛刺、尖角、锐边和机械损伤; 表面镀层应均匀、光亮、无雾斑、剥层等缺陷;

Parts may not have the appearance of harmful burrs, sharp corners, sharp edges and mechanical damage, surface coating should be uniform, bright, no fog spots, delamination and other defects.

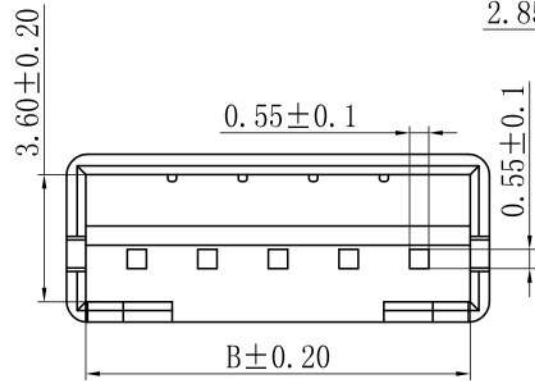
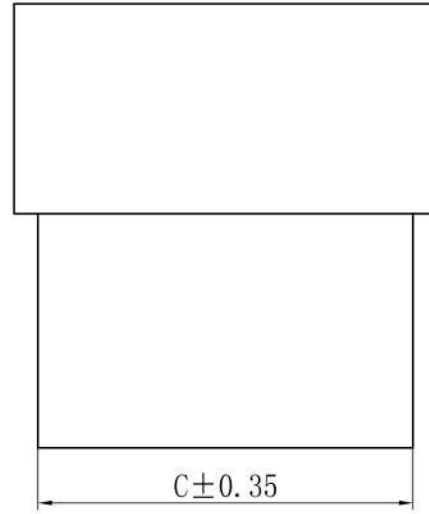
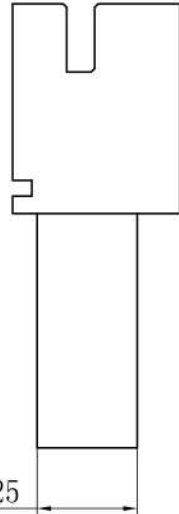
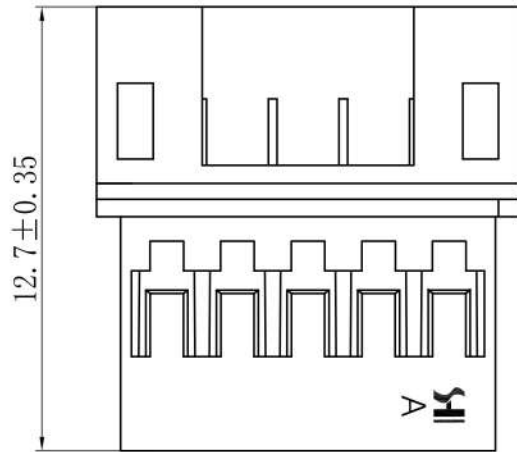
TOLERANCE UNLESS OTHERWISE SPECIFIED		*: Inspection Item		Canner® www.canner.co.in	
.X±0.30	X." ±1°	NO.	:Cp/Cpk and SPC Control Item	名称	PH-T-5.6/2 TERMINAL
.XX±0.2	.X° ±			材料	磷青铜
.XXX±0.10	.XX° ±			料厚	0.20 mm
制图	赵旭强	料宽		编号	SH20001-T-562
审核	林云昆	料宽		比例	1:1
批准	谭猛	日期	2022.02.17	角法	PROJ.
APPROVE					规格书

标记 MARK	更改内容 MODIFICATION	日期 DATE	修改 DRAW	核准 APPROVE



技术要求Specification:

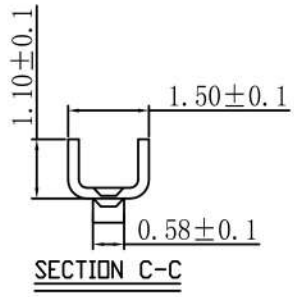
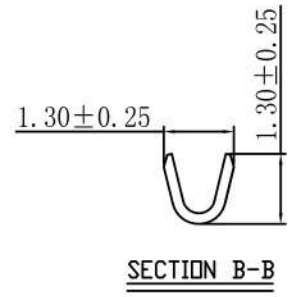
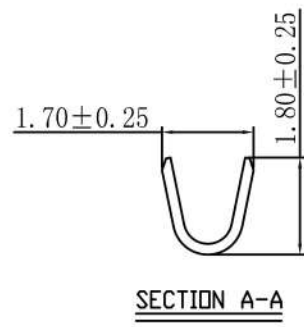
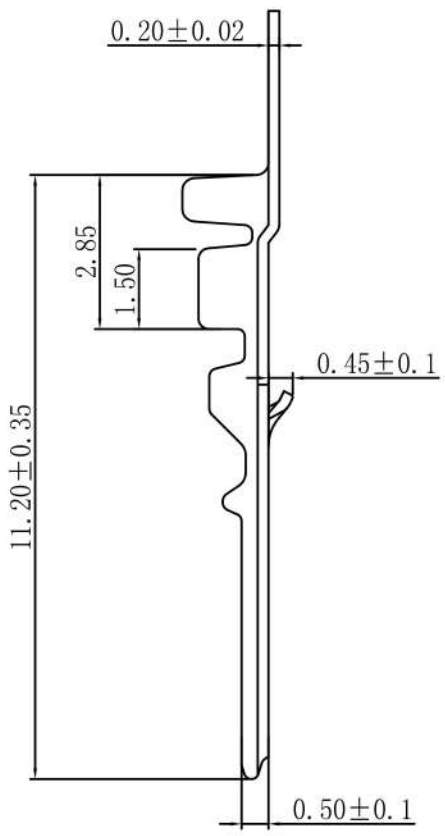
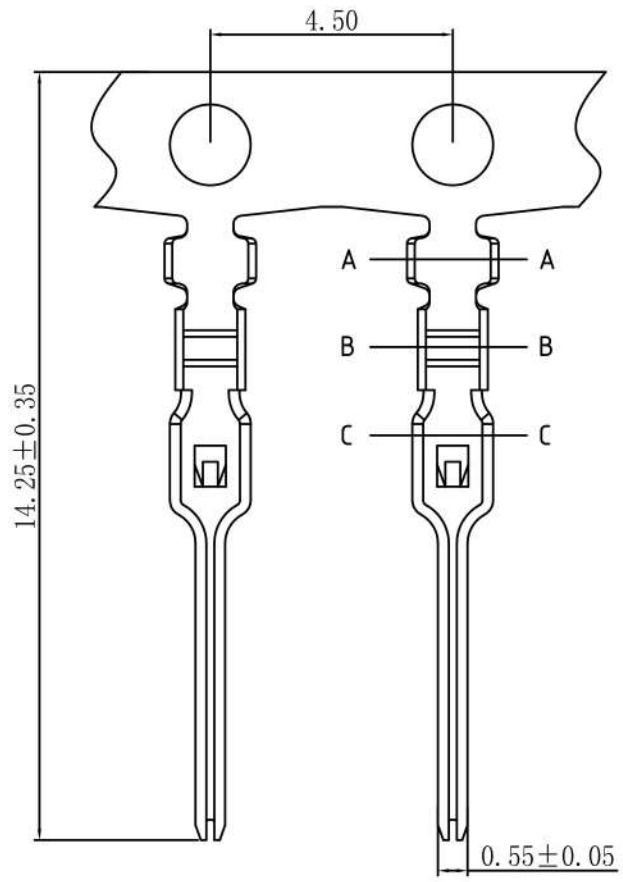
- 1、材质Material: PA66 UL94V-0;
- 2、额定电流 Current rating:2.0A AC,DC
- 3、额定电压 Voltage rating: 100V AC,DC
- 4、温度范围 Temperature range:-25℃to+85℃
- 5、接触电阻 Contact resistance: ≤20mΩ
- 6、绝缘电阻 Insulation resistance: ≥1000MΩ
- 7、耐压 Withstand voltage:800V AC/minute
- 8、塑件表面平整光洁, 无明显的毛刺、气泡、变形、浇口拉伤、缺料等不良现象。
Plastic surface smooth and clean, no obvious burrs, bubbles, distortion, gate strain, lack of material and other undesirable phenomena.



线数	型号	尺寸		
		A	B	C
2	SH20001-2R	2.00	5.00	4.70
3	SH20001-3R	4.00	7.00	6.70
4	SH20001-4R	6.00	9.00	8.70
5	SH20001-5R	8.00	11.00	10.70
6	SH20001-6R	10.00	13.00	12.70
7	SH20001-7R	12.00	15.00	14.70
8	SH20001-8R	14.00	17.00	16.70
9	SH20001-9R	16.00	19.00	18.70
10	SH20001-10R	18.00	21.00	20.70
11	SH20001-11R	20.00	23.00	22.70
12	SH20001-12R	22.00	25.00	24.70
13	SH20001-13R	24.00	27.00	26.70
14	SH20001-14R	26.00	29.00	28.70
15	SH20001-15R	28.00	31.00	30.70
16	SH20001-16R	30.00	33.00	32.70
17	SH20001-17R	32.00	35.00	34.70
18	SH20001-18R	34.00	37.00	36.70
19	SH20001-19R	36.00	39.00	38.70
20	SH20001-20R	38.00	41.00	40.70

TOLERANCE UNLESS OTHERWISE SPECIFIED		*: Inspection Item		Canner® www.canner.co.in	
.X±0.30	X." ±1"	(NO.)	:Cp/Cpk and SPC Control Item	名称	PH-NR HOUSING
.XX±0.2	.X° ±	材料	PA66	编号	SH20001-NR
.XXX±0.10	.XX° ±	料厚		单位	mm
制图	赵旭强	料宽		比例	1:1
审核	林云昆	日期	2022.04.15	版本	A1
批准	谭猛	角法	角法	规格书	

标记 MARK	更改内容 MODIFICATION	日期 DATE	修改 DRAW	核准 APPROVE



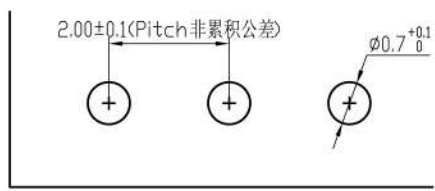
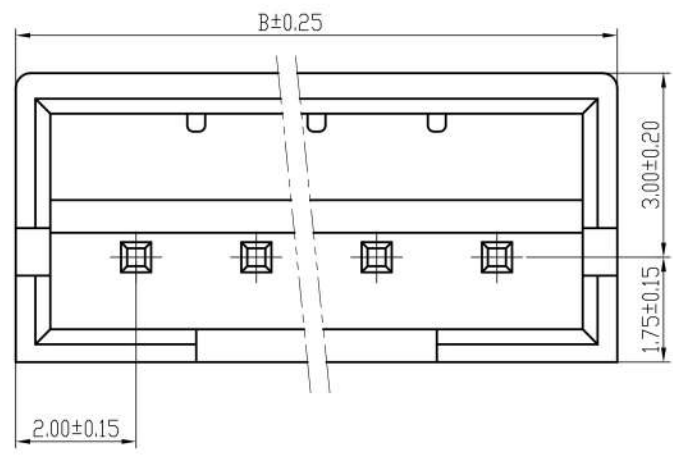
技术要求Specification:

- 1、材质：磷青铜，表面镀锡 Material:Phos.Bronze Tin-Plated
- 2、适用线规 Applicable wire:AWG#30-#24;
- 3、零件外观不得有有害毛刺、尖角、锐边和机械损伤;表面镀层应均匀、光亮、无雾斑、剥层等缺陷;

Parts may not have the appearance of harmful burrs,sharp corners,sharp edges and mechanical damage,surface coating should be uniform, bright,no fog spots,delamination and other defects.

TOLERANCE UNLESS OTHERWISE SPECIFIED		*: Inspection Item		Canner® www.canner.co.in			
.X±0.30	X.° ±1°	NO.	:Cp/Cpk and SPC Control Item	名称	PH-RT TERMINAL		
.XX±0.2	.X° ±			材料	磷青铜	标题	
.XXX±0.10	.XX° ±			料厚	0.20 mm	编号	SH20001-RT
制图	赵旭强	料宽		DWG NO.		单位	m m
审核	林云昆	角法		比例	1:1	版本	A1
批准	谭猛	日期	2023.04.10	角法	PROJ.	规格书	

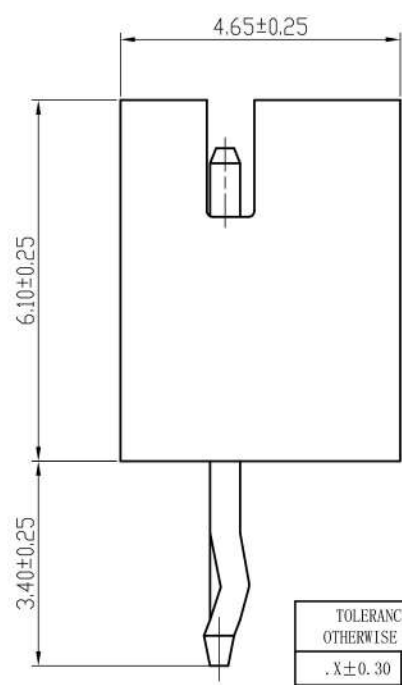
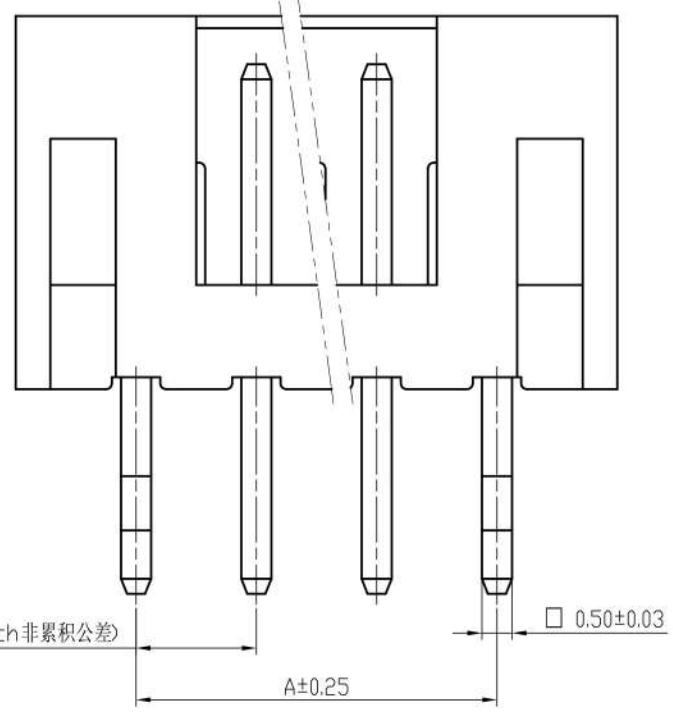
标记 MARK	更改内容 MODIFICATION	日期 DATE	修改 DRAW	核准 APPROVE



电路板尺寸
电路板厚度为0.8~1.6 mm

技术要求Specification:

- 1、材质Material: 塑座 Base:PA66 UL94V-0;
针 Pin:黄铜 Brass Tin-Plated
- 8、塑件表面平整光洁, 无明显的毛刺、气泡、变形、浇口拉伤、缺料等不良现象。
- Plastic surface smooth and clean, no obvious burrs, bubbles, distortion, gate strain, lack of material and other undesirable phenomena.

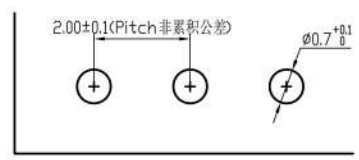
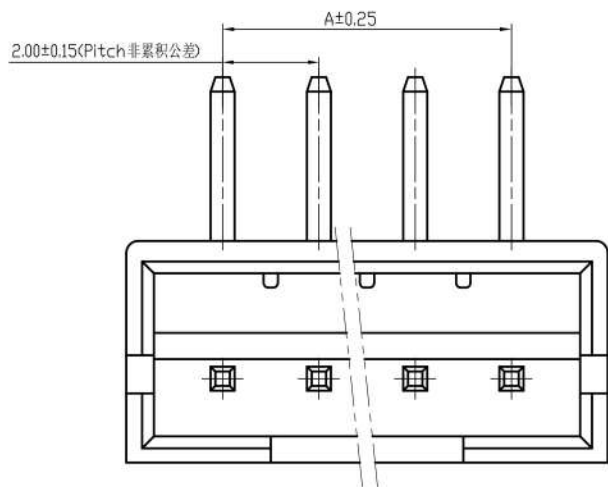


线数	型号	尺寸	
		A	B
2	SH20001-2A	2.00	6.00
3	SH20001-3A	4.00	8.00
4	SH20001-4A	6.00	10.00
5	SH20001-5A	8.00	12.00
6	SH20001-6A	10.00	14.00
7	SH20001-7A	12.00	16.00
8	SH20001-8A	14.00	18.00
9	SH20001-9A	16.00	20.00
10	SH20001-10A	18.00	22.00
11	SH20001-11A	20.00	24.00
12	SH20001-12A	22.00	26.00
13	SH20001-13A	24.00	28.00
14	SH20001-14A	26.00	30.00
15	SH20001-15A	28.00	32.00
16	SH20001-16A	30.00	34.00

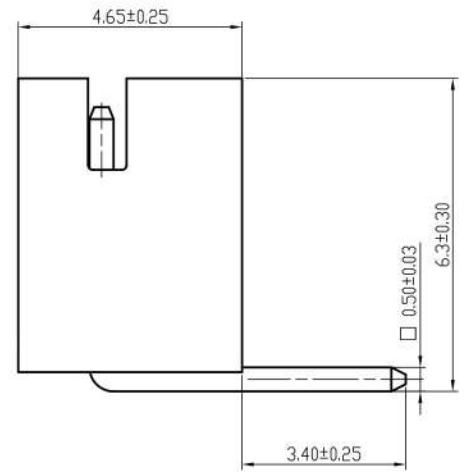
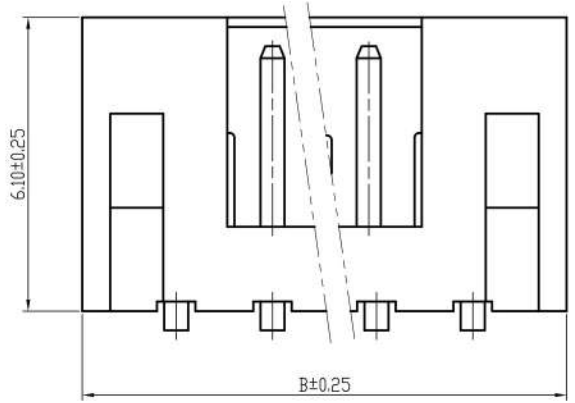
TOLERANCE UNLESS OTHERWISE SPECIFIED		*: Inspection Item		www.canner.co.in	
.X±0.30	X." ±1"	NO.	:Cp/Cpk and SPC Control Item		
.XX±0.2	.X° ±	材料	PA66	名称	PH-NA WAFER
.XXX±0.10	.XX° ±	料厚		料号	SH20001-NA
		料宽		比例	1:1
制图	赵旭强	料厚		角法	⊕
审核	林云昆	料宽		角法	⊕
批准	谭猛	日期	2022.02.17	角法	⊕
		日期		角法	⊕

规格书

标记 MARK	更改内容 MODIFICATION	日期 DATE	修改 DRAW	核准 APPROVE



电路板尺寸
电路板厚度为0.8 1:6 mm



技术要求Specification:

- 1、材质Material: 塑座 Base:PA66 ;
针 Pin:黄铜 Brass Tin-Plated
- 2、塑件表面平整光洁, 无明显的毛刺、气泡、变形、浇口拉伤、缺料等不良现象。

Plastic surface smooth and clean, no obvious burrs, bubbles, distortion, gate strain, lack of material and other undesirable phenomena.

线数	型号	尺寸	
		A	B
2	SH20001-2AW	2.00	6.00
3	SH20001-3AW	4.00	8.00
4	SH20001-4AW	6.00	10.00
5	SH20001-5AW	8.00	12.00
6	SH20001-6AW	10.00	14.00
7	SH20001-7AW	12.00	16.00
8	SH20001-8AW	14.00	18.00
9	SH20001-9AW	16.00	20.00
10	SH20001-10AW	18.00	22.00
11	SH20001-11AW	20.00	24.00
12	SH20001-12AW	22.00	26.00
13	SH20001-13AW	24.00	28.00
14	SH20001-14AW	26.00	30.00
15	SH20001-15AW	28.00	32.00
16	SH20001-16AW	30.00	34.00

TOLERANCE UNLESS OTHERWISE SPECIFIED		*: Inspection Item		Canner® www.canner.co.in	
. X ± 0.20	ANGLES	NO.	: Cp/Cpk and SPC Control Item	名称	PH-NAW HOUSING
. XX ± 0.15	. X° ± 0.0°	材料	PA66	料厚	
. XXX ± 0.10	. X° ± 0.00°	MATERIAL		料宽	
制图	陈小浓	料厚		料宽	
DRAWN		THICK		比例	1:1
审核	林金喜	料宽		角法	
CHECKED		WIDE		日期	2012. 3. 20
批准	江树钦	日期	2012. 3. 20	角法	
APPROVE		DATE			规格书