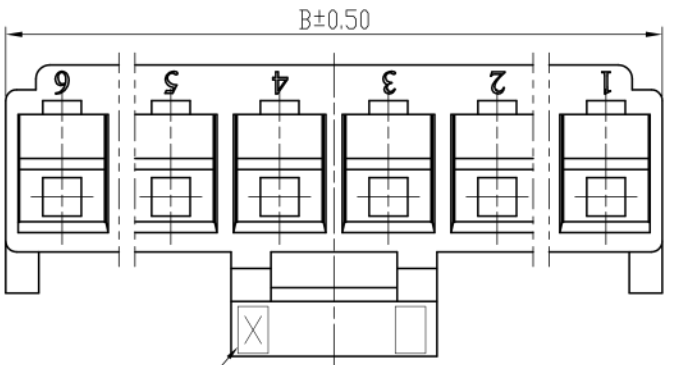
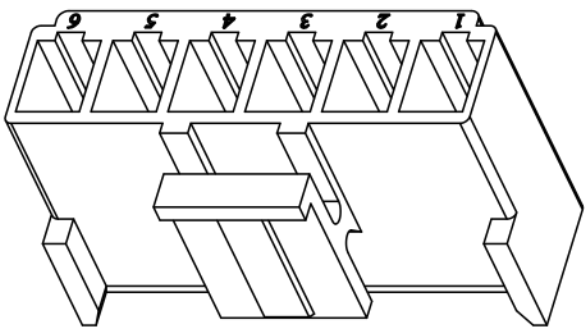


标记 MARK	更改内容 MODIFICATION	日期 DATE	修改 DRAW	核准 APPROVE

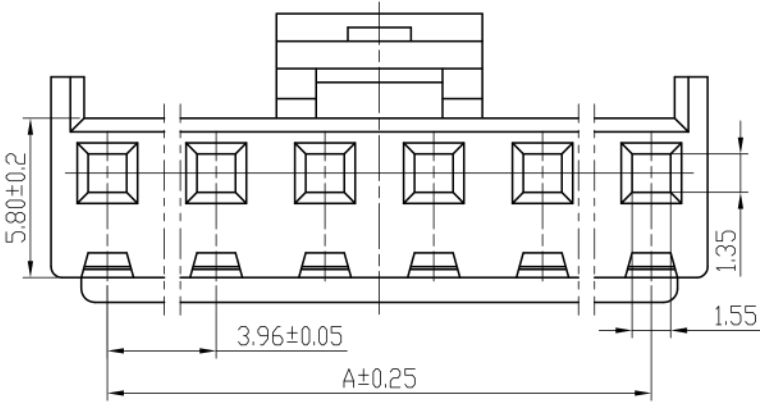
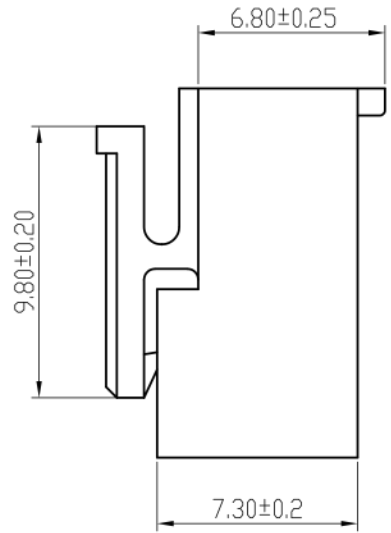
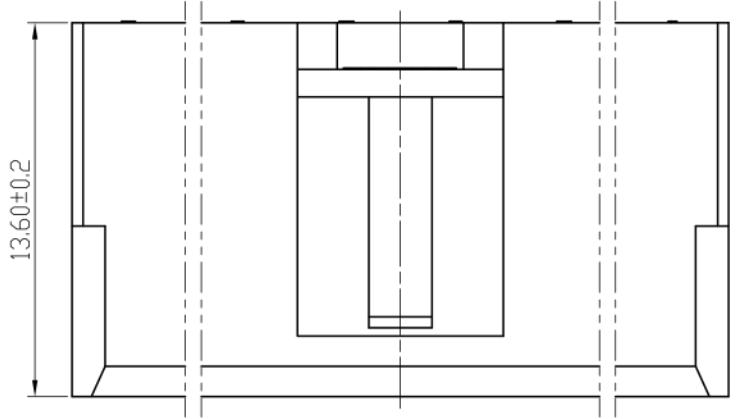


穴号



技术要求Specification:

- 1、材质Material: PA66 UL94V-0;
- 2、额定电流 Current rating:7.0A AC,DC
- 3、额定电压 Voltage rating: 250V AC,DC
- 4、温度范围 Temperature range:-25℃to+85℃
- 5、接触电阻 Contact resistance:≤15mΩ
- 6、绝缘电阻 Insulation resistance:≥1000MΩ
- 7、耐压 Withstand voltage:1500V AC/minute
- 8、塑件表面平整光洁,无明显的毛刺、气泡、变形、浇口拉伤、缺料等不良现象。
Plastic surface smooth and clean, no obvious burrs, bubbles, distortion, gate strain, lack of material and other undesirable phenomena.
- 9、适用端子型号: SH39600-T/SH39600-T-13;
Applicable Contact :SH39600-T/SH39600-T-13;



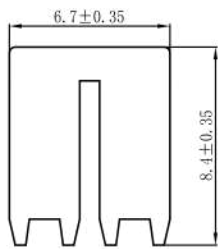
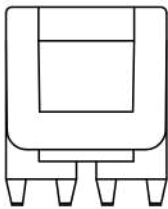
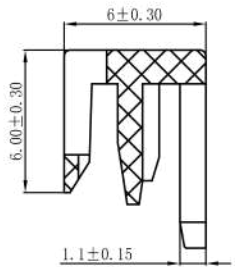
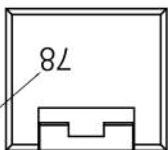
线数	型号	尺寸		备注
		A	B	
2	SH39600-2Y	3.96	7.90	有保持器配合VH-2S
3	SH39600-3Y	7.92	11.81	有保持器配合VH-3S
4	SH39600-4Y	11.88	16.42	有保持器配合VH-4S
5	SH39600-5Y	15.84	20.38	无
6	SH39600-6Y	19.80	24.34	无
7	SH39600-7Y	23.76	28.30	无
8	SH39600-8Y	27.72	32.26	无
9	SH39600-9Y	31.68	36.22	无
10	SH39600-10Y	35.64	40.18	无
11	SH39600-11Y	39.60	44.14	无
12	SH39600-12Y	43.56	48.10	无
13	SH39600-13Y	47.52	52.06	无
14	SH39600-14Y	51.48	56.02	无
15	SH39600-15Y	55.44	59.98	无
16	SH39600-16Y	59.40	63.94	无

TOLERANCE UNLESS OTHERWISE SPECIFIED		*: Inspection Item		www.canner.co.in	
.X±0.30	X.° ±1°	(NO.)	:Cp/Cpk and SPC Control Item		
.XX±0.20	.X° ±	材料	PA66	名称	VH-NY HOUSING
.XXX±0.10	.XX° ±	料厚		编号	SH39600-Y
		料宽		比例	1:1
制图	赵旭强	日期	2022.03.01	角法	
审核	林云昆	版本		规格书	
批准	谭猛	单位			

标记 MARK	更改内容 MODIFICATION	日期 DATE	修改 DRAW	核准 APPROVE

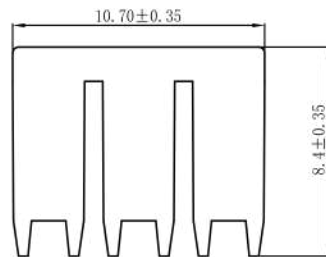
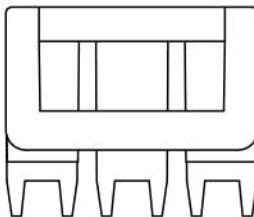
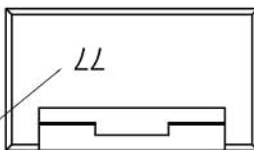
SH39600-2S

模号



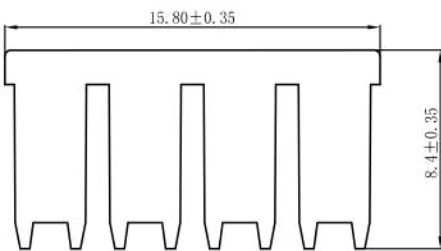
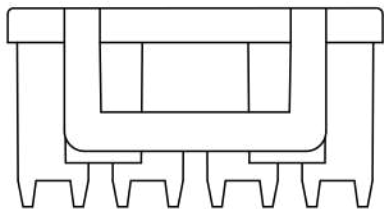
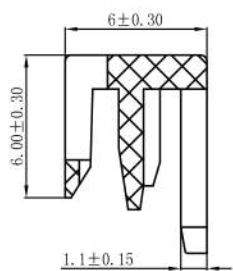
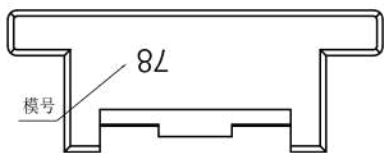
SH39600-3S

模号



SH39600-4S

模号



技术要求Specification:

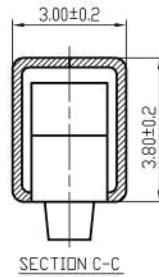
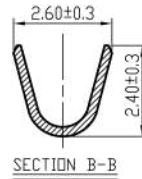
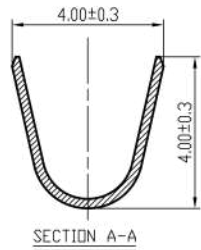
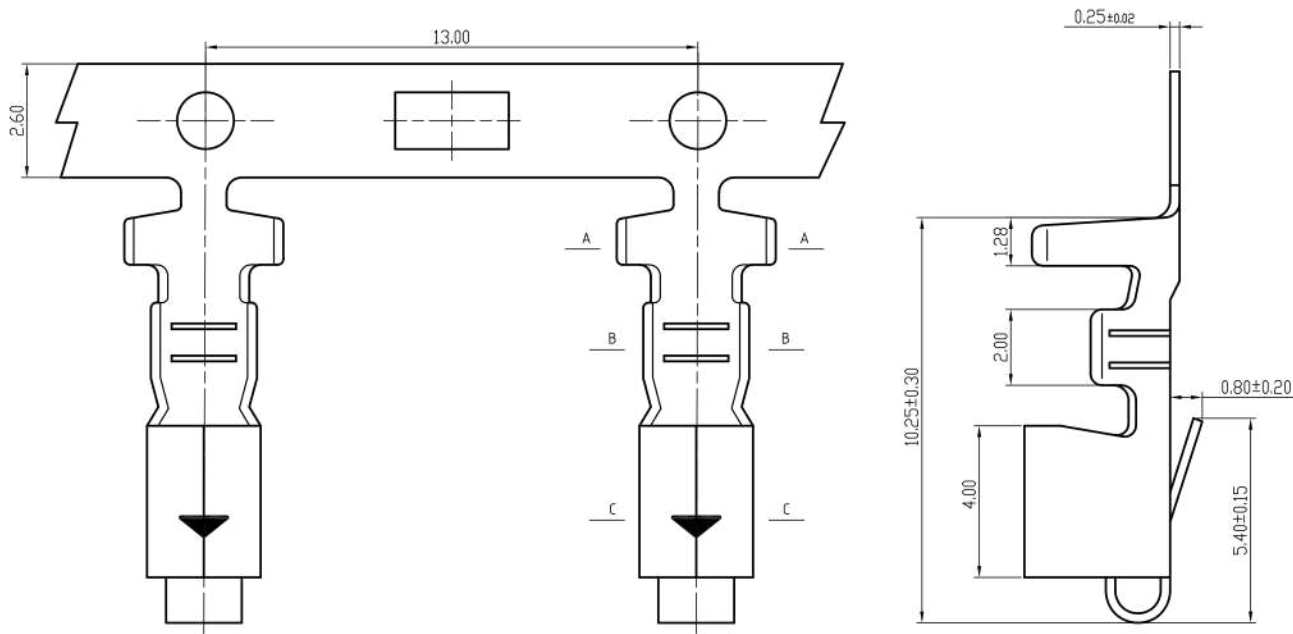
- 1、材质Material: PA66 UL94V-0;
- 2、额定电流 Current rating:7.0A AC,DC
- 3、额定电压 Voltage rating: 250V AC,DC
- 4、温度范围 Temperature range:-25℃to+85℃
- 5、绝缘电阻 Insulation resistance: ≥1000MΩ
- 6、耐压 Withstand voltage:1500V AC/minute
- 7、塑件表面平整光洁,无明显的毛刺、气泡、变形、浇口拉伤、缺料等不良现象。

Plastic surface smooth and clean, no obvious burrs, bubbles, distortion, gate strain, lack of material and other undesirable phenomena.

8、适配塑件型号: SH39600-2Y/-3Y/-4Y;
Suitable Housing Type: SH39600-2Y/-3Y/-4Y;

TOLERANCE UNLESS OTHERWISE SPECIFIED		*: Inspection Item		Canner® www.canner.co.in			
.X±0.30	X." ±1"	NO.	:Cp/Cpk and SPC Control Item	名称	VH-4S HOUSING		
.XX±0.20	.X° ±			料厚	SH39600-4S	单位	mm
.XXX±0.10	.XX° ±			料宽			
制图	赵旭强	料厚	THICK	编号	SH39600-4S	版本	A
审核	林云昆	料宽	WIDE	比例	1:1	版本	A
批准	谭猛	日期	DATE	角法	PROJ.	规格书	
			2021.04.09				

标记 MARK	更改内容 MODIFICATION	日期 DATE	修改 DRAW	核准 APPROVE

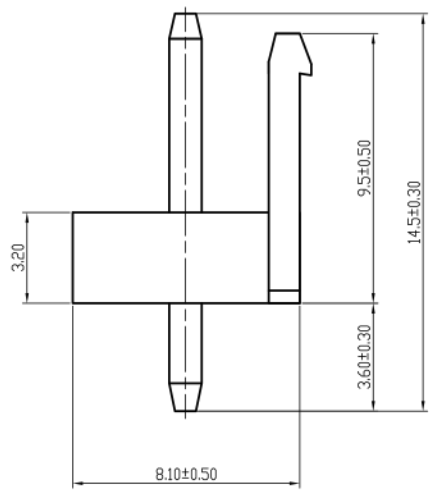
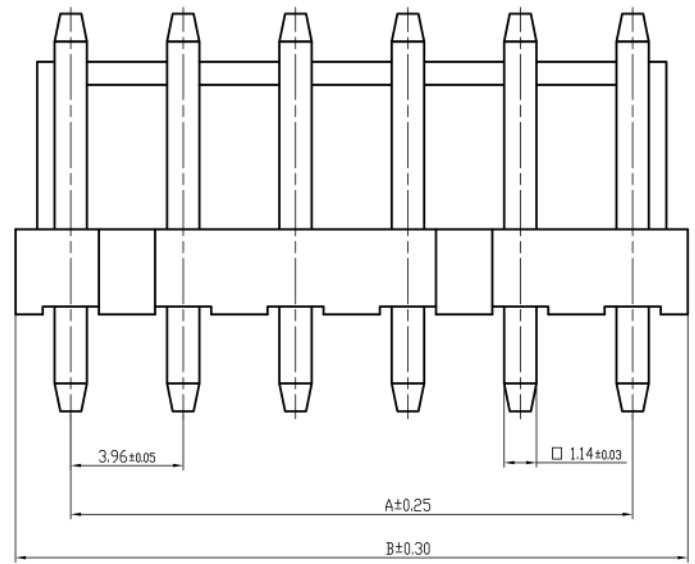


技术要求 Specification:

- 1、材质：磷青铜,表面镀锡;
Material: Phos. Bronze Tin-Plated
- 2、额定电流 Current rating: 7.0A AC, DC
- 3、额定电压 Voltage rating: 250V AC, DC
- 4、接触电阻 Contact resistance: $\leq 15\text{m}\Omega$
- 5、耐压 Withstand voltage: 1500V AC/minute
- 6、插入力 Insertion: $\leq 10\text{N}$, 拔出力 Withdrawal: $\geq 4\text{N}$, 端子保持力 $\geq 29\text{N}$;
- 7、零件外观不得有有害毛刺、尖角、锐边和机械损伤; 表面镀层应均匀、光亮、无雾斑、剥层等缺陷;
Parts may not have the appearance of harmful burrs, sharp corners, sharp edges and mechanical damage, surface coating should be uniform, bright, no fog spots, delamination and other defects.
- 8、适用导线范围: Applicable wire: AWG # 22-# 18;
- 9、适配塑件型号:
SH39600-NY/SH39600-NYS/SH39600-NYS(3.85);
Suitable Housing Type:
SH39600-NY/SH39600-NYS/SH39600-NYS(3.85);

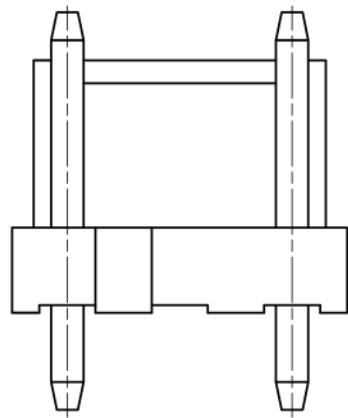
TOLERANCE UNLESS OTHERWISE SPECIFIED		*: Inspection Item		Canner® www.canner.co.in			
.X±0.30	X." ±1"	NO.	:Cp/Cpk and SPC Control Item	名称	VH-T-13 TERMINAL		
.XX±0.20	.X° ±			材料	磷青铜	编号	SH39600-T-13
.XXX±0.10	.XX° ±			料厚	0.25 mm	单位	mm
制图	赵旭强	料宽	/	比例	1:1	版本	A
审核	江树钦	日期		2023.03.08	角法	⊕	规格书
批准	谭猛	日期	2023.03.08	角法	⊕	规格书	

标记 MARK	更改内容 MODIFICATION	日期 DATE	修改 DRAW	核准 APPROVE




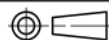
技术要求Specification:

- 1、材质Material: PA66 UL94V-0;
针Pin: 黄铜镀锡 Brass Tin-Plated
- 2、塑件表面平整光洁, 无明显的毛刺、气泡、变形、浇口拉伤、缺料等不良现象。
Plastic surface smooth and clean, no obvious burrs, bubbles, distortion, gate strain, lack of material and other undesirable phenomena.

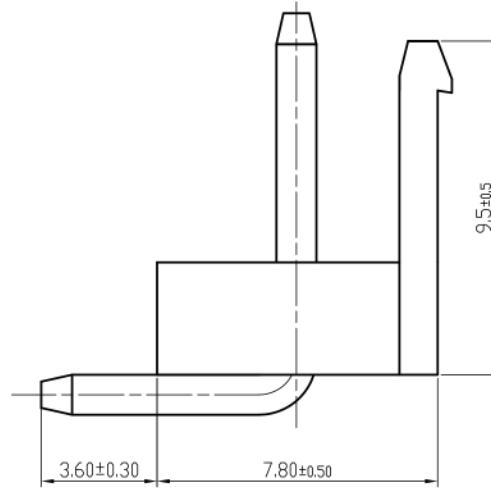
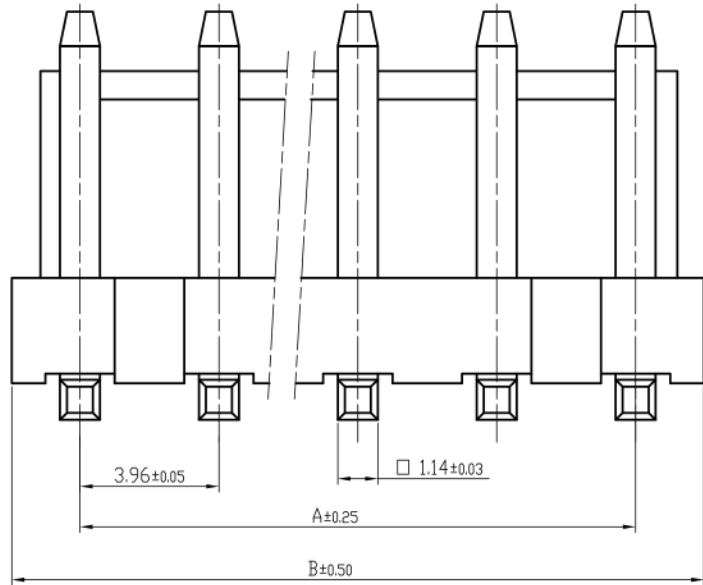


3A2针

线数	型号	尺寸	
		A	B
2	SH39600-2A	3.96	7.92
3	SH39600-3A	7.92	11.88
4	SH39600-4A	11.88	15.84
5	SH39600-5A	15.84	19.80
6	SH39600-6A	19.80	23.76
7	SH39600-7A	23.76	27.72
8	SH39600-8A	27.72	31.68
9	SH39600-9A	31.68	35.64
10	SH39600-10A	35.64	39.60
11	SH39600-11A	39.60	43.56
12	SH39600-12A	43.56	47.52
13	SH39600-13A	47.52	51.48
14	SH39600-14A	51.48	55.44
15	SH39600-15A	55.44	59.40
16	SH39600-16A	59.40	63.36

TOLERANCE UNLESS OTHERWISE SPECIFIED		*: Inspection Item		 www.canner.co.in	
.X±0.30	X.° ±1°	(NO.)	:Cp/Cpk and SPC Control Item		
.XX±0.20	.X° ±	材料 MATERIAL	PA66	名称 TITLE	VH-NAWafer
.XXX±0.10	.XX° ±	料厚 THICK		编号 DWG NO.	SH39600-NA
		料宽 WIDE		比例 SCALE	1:1
制图 DRAWIN	谭猛	日期 DATE	2018.05.06	角法 PROJ.	
审核 CHECKED	彭文德			单位 UNIT	mm
批准 APPROVE	林云昆			版本 REV.	A
					规格书

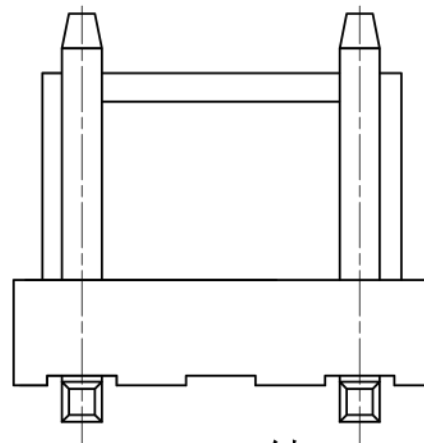
标记 MARK	更改内容 MODIFICATION	日期 DATE	修改 DRAW	核准 APPROVE



技术要求Specification:

- 1、材质Material: PA66 UL94V-0;
针Pin: 黄铜镀锡 Brass Tin-Plated
- 2、塑件表面平整光洁, 无明显的毛刺、气泡、变形、浇口拉伤、缺料等不良现象。
Plastic surface smooth and clean, no obvious burrs, bubbles, distortion, gate strain, lack of material and other undesirable phenomena.

线数	型号	尺寸	
		A	B
2	SH39600-2AW	3.96	7.92
3	SH39600-3AW	7.92	11.88
4	SH39600-4AW	11.88	15.84
5	SH39600-5AW	15.84	19.80
6	SH39600-6AW	19.80	23.76
7	SH39600-7AW	23.76	27.72
8	SH39600-8AW	27.72	31.68
9	SH39600-9AW	31.68	35.64
10	SH39600-10AW	35.64	39.60
11	SH39600-11AW	39.60	43.56
12	SH39600-12AW	43.56	47.52
13	SH39600-13AW	47.52	51.48
14	SH39600-14AW	51.48	55.44
15	SH39600-15AW	55.44	59.40
16	SH39600-16AW	59.40	63.36



3AW2针

TOLERANCE UNLESS OTHERWISE SPECIFIED		*: Inspection Item		www.canner.co.in		
.X±0.30	X.° ±1°	(NO.)	:Cp/Cpk and SPC Control Item			
.XX±0.20	.X° ±	材料 MATERIAL	PA66	名称 TITLE	VH-NAW Wafer	
.XXX±0.10	.XX° ±	料厚 THICK	/	编号 DWG NO.	SH39600-NAW	
制图 DRAWIN	谭猛	料宽 WIDE		比例 SCALE	1:1	单位 UNIT
审核 CHECKED	林金喜	日期 DATE	2018.05.06	版本 REV.	A	规格书
批准 APPROVE	江树钦	角法 PROJ.				